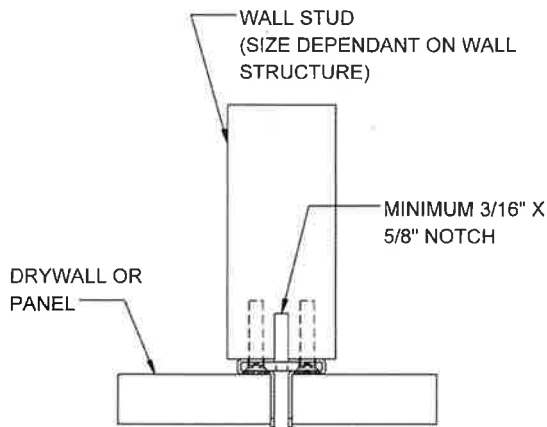
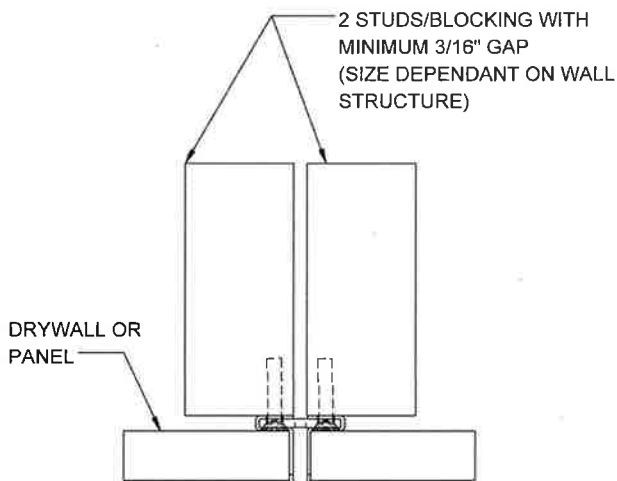


# Recessed Standard Installation

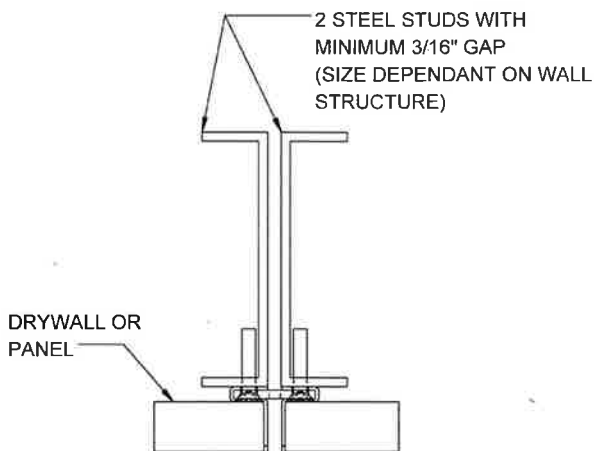
## 3 Different Wall Structure Options



**OPTION 1**  
**FIGURE 1**

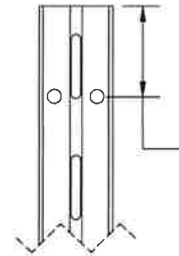


**OPTION 2**  
**FIGURE 2**

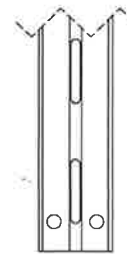


**OPTION 3**  
**FIGURE 3**

STANDARDS ARE TYPICALLY NOT SYMETRICAL ALONG THEIR HEIGHT SO ALL RECESSED STANDARDS SHOULD BE MOUNTED WITH THE SAME SIDES UP. YOU CAN REFER TO THE SPACING OF SCREW HOLES TO MAINTAIN THE STANDARDS ORIENTATION.



MAINTAIN THE  
DISTANCE OF SCREW  
HOLES TO DETERMINE  
THE TOP POSITION.  
(NOTE: HOLE POSITIONS MAY  
NOT MATCH FIGURE 4)



**FIGURE 4**

BEFORE MOUNTING, DETERMINE HOW FAR FROM THE FLOOR YOUR STANDARDS NEED TO BE MOUNTED. USE THE BOTTOM OF THE LOWEST SLOT AS A GUIDE TO MAINTAIN THE INSTALLATION HEIGHT.

ONCE ALIGNED, MAKE SURE TO FASTEN TO A SECURE WALL STUD (OR EQUIVALENT BLOCKING) USING APPROPRIATE SCREWS (TO BE DETERMINED BY THE STUD MATERIAL). MAKE SURE TO UTILIZE EVERY SCREW HOLE.

REFER TO FIGURES 1-3 FOR THE DIFFERENT WALL STRUCTURE OPTIONS THAT RECESSED STANDARDS CAN BE SAFETY MOUNTED TO.

THE WALL CAN NOW BE FINISHED AS REQUIRED.  
(NOTE: DRYWALL/PANEL THICKNESS WILL DETERMINE WHICH RECESSED STANDARD MODEL IS REQUIRED.)