

# **RDI PALAY DISPLAY**

STORE FIXTURES & SUPPLIES SINCE 1945

## **Flexible Mannequin Assembly Instructions**

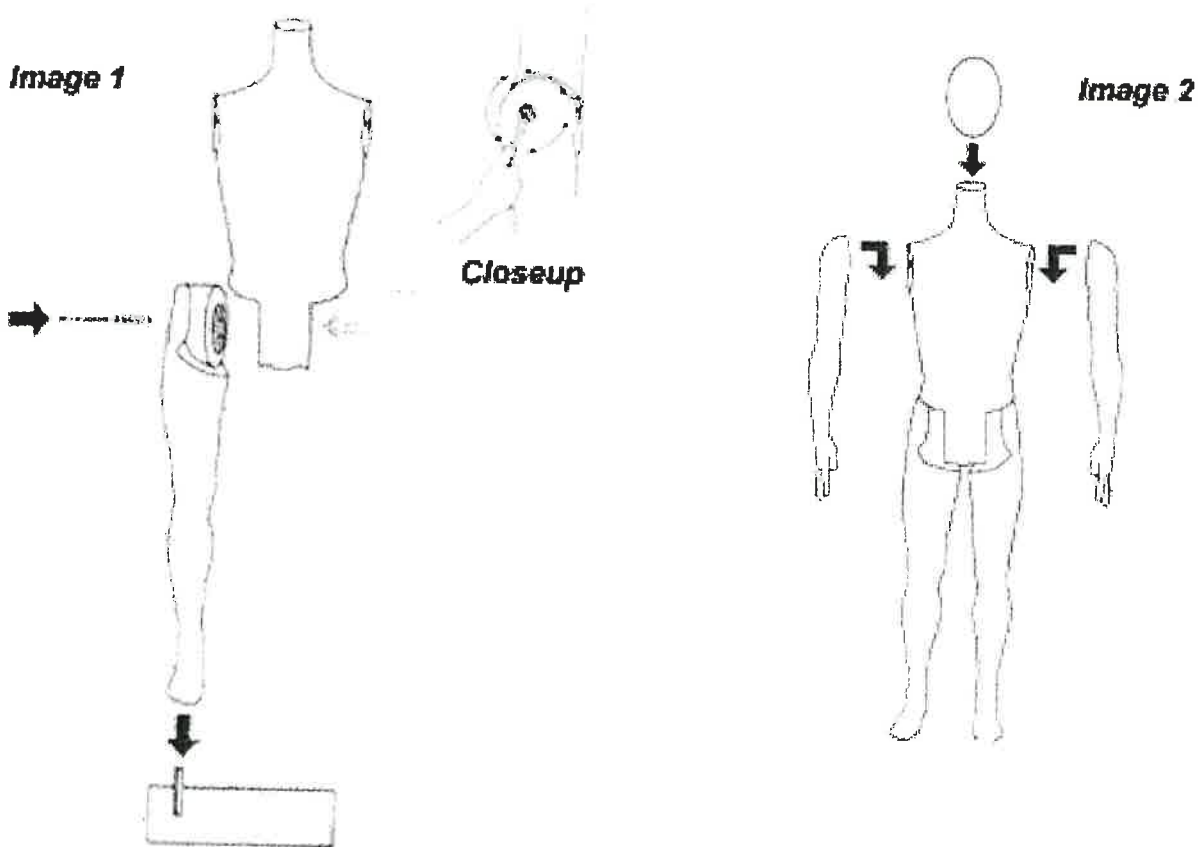
**Please read all instructions before beginning.**

**Failure to follow instructions can lead to mannequin damages.**

### **Step 1: Leg Attachment.**

**To attach eac leg, use a wrench with a 1/2" socket and extension to connect the bolt, washers and spring in order shown below.**

**Tighten bolt completely, then loosen one full turn in opposite direction (See image 1 closeup).**



### **Step 2: Arms & Head Attachment:**

**Arms: Align arms with shoulder hardware. Push down to lock in place.**

**Head: Place head onto neck of torso. (Image 2)**

# **RDI PALAY DISPLAY**

STORE FIXTURES & SUPPLIES SINCE 1945

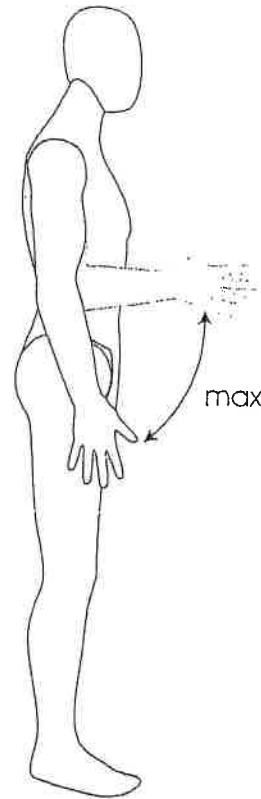
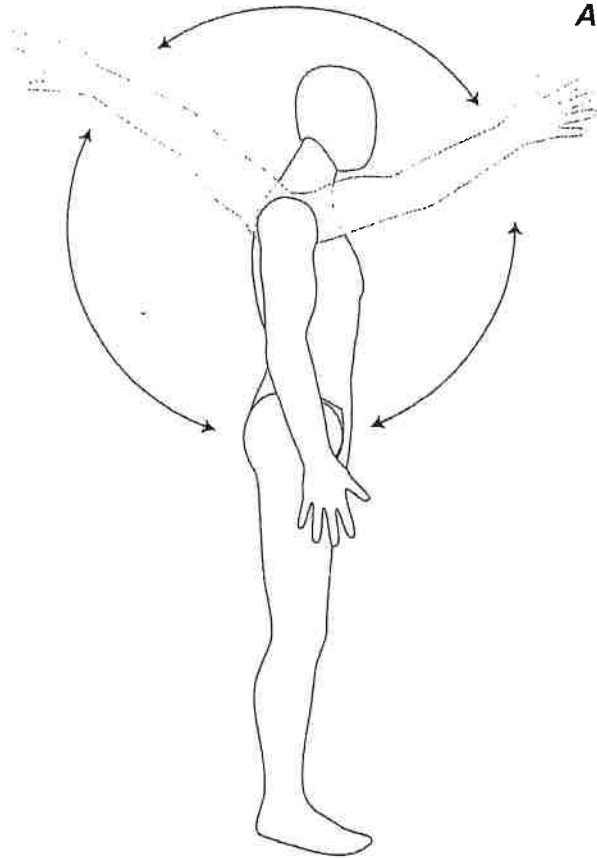
## **Flexible Mannequin Articulation**

**Please read all instructions before beginning.**

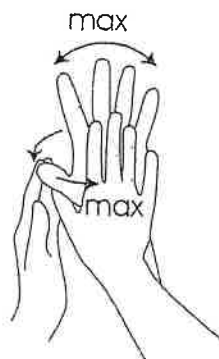
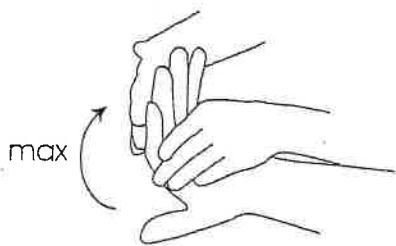
**Failure to follow instructions can lead to mannequin damages.**

### **Upper Body Articulation**

#### **Arm Capabilities**



#### **Hand Capabilities**



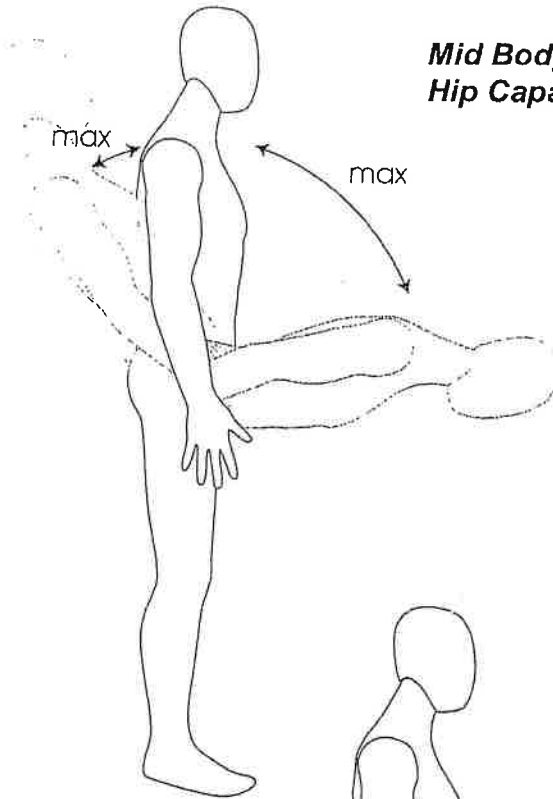
#### **Wrist Capabilities**



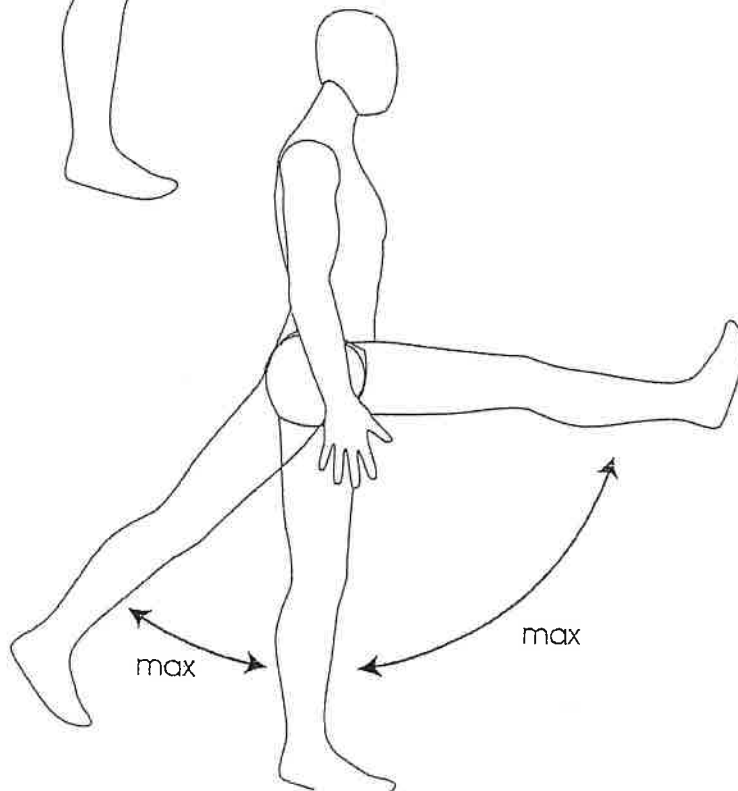
# **PDI PALAY DISPLAY**

STORE FIXTURES & SUPPLIES SINCE 1945

**Flexible Mannequin Articulation**  
**Read all instructions before beginning.**  
**Failure to follow instructions can lead to mannequin damages.**



**Mid Body Articulation**  
**Hip Capacities**



**Lower Body Articulation**  
**Leg Capabilities**

