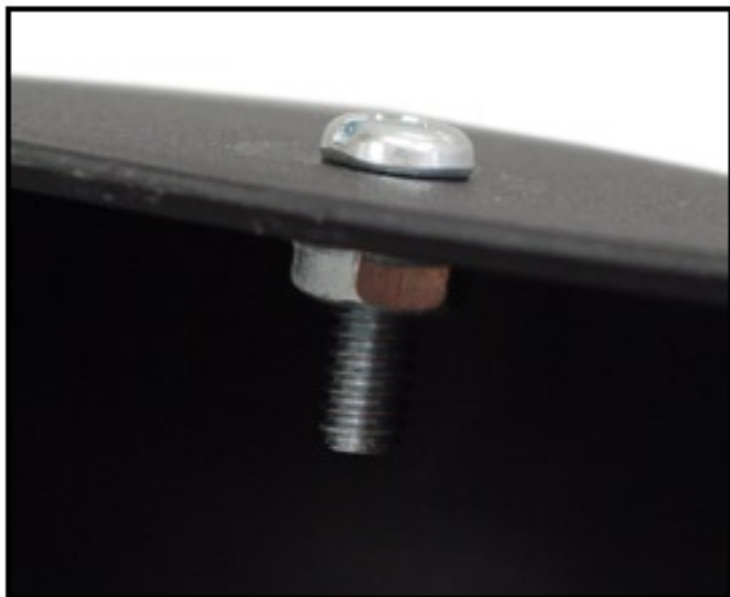
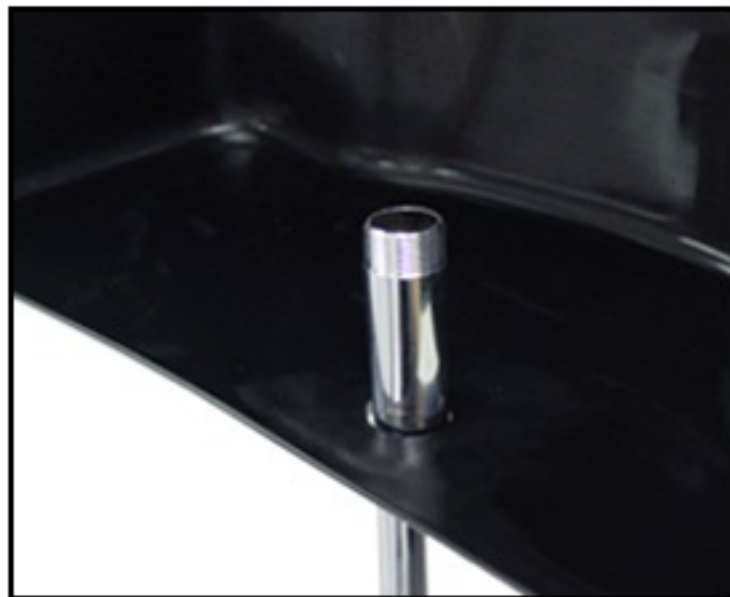


## Assembly Instructions for Countertop Clothing Form - 9344



1. Install screw and nut into hang hook hole of form.



2. Assemble base and upright, and slide form onto upright.



3. Set screw into top of upright pole.



# ***PDi***

**PALAY DISPLAY INDUSTRIES**

10901 Louisiana Ave. S. Bloomington, MN 55438 • [www.palaydisplay.com](http://www.palaydisplay.com) • 800-446-6106